

Sign up now!

This much requested course is now available to you and your colleagues and will be filling up fast, so sign up now and secure your attendance

For sign up or more information please contact:

Tom Fugers, Sales Manager
Tel.: 020 510 69 03
Mobiel: 06 34 364 114
@: tf@secma.org

Pascal Hebels, Sales Consultant
Tel.: 020 510 69 03
Mobiel: 06 53 767 195
@: ph@secma.org

"Ultrasound Guided Pain Management"

Date:

May 22nd & 23rd 2015

Place:

FUJIFILM SonoSite
Joop Geesinkweg 140
1114 AB Amsterdam

Price: 975 Euro ex VAT



Ultrasound
guided pain
management
course

Chronic
pain
treatment

Post
OP
pain relief

SECMA CLINICAL TRAINING - MAY 22 - 23 2015

dk SECMA

Amtsvejen 105A
DK-3320 Skævinge
Denmark
Phone +45 8710 1425
Fax +45 4913 4370
info@secma.dk
www.secma.dk

se SECMA

Stora Ävägen 21
SE-436 34 Askim
Sweden
Phone +46 (0)771 60 80 00
Fax +46 (0)8 35 68 50
info@secma.se
www.secma.se

no SECMA

Postboks 9495 Sluppen
NO-7496 Trondheim
Norway
Phone +47 8151 0049
Fax +47 2106 2717
info@secma.as
www.secma.as

nl SECMA

Ditlaar 7
NL-1066 EE Amsterdam
Netherland
Phone +31 (0) 20 510 69 03
Fax +31 (0) 20 524 81 10
info@secma.org
www.secma.org

Chronic pain management and ultrasound

Course Director
Consultant Anaesthetist **Lars Walén**, MD

Operationscentrum - Norrlands Universitetssjukhus
Speciality: Ultrasound in Anaesthesiology



Course Director
Associate professor **Jens Børglum**, MD, PhD, Consultant, Head of Research

Department of Anaesthesia and Intensive Care Medicine, Roskilde Hospital, University of Copenhagen
Speciality: Ultrasound in Anaesthesiology and Intensive Care Medicine.



Post OP pain management and ultrasound

Programme - Day 1

Registration and coffee

Introduction: Lars Walén & Jens Børglum

Lectures:

- Advantages and disadvantages of ultrasound in chronic pain interventions
- Basic techniques for ultrasound guided injections
- Stellate ganglion, cervical root blocks, greater occipital nerve
- Sonoanatomy and ultrasound guided blocks: spine

All lectures for Day 1 & 2 will be combined with practical hands-on live scanning on models

Programme - Day 2

Shoulder

- interscalene with catheter - pros and cons (considerable risks involved)
- suprascapular catheter
- supraclavicular catheter (upper part of brachial plexus)

Upper limb

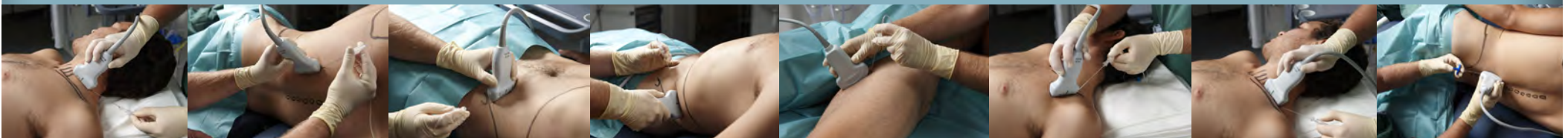
- supraclavicular catheter
- lateral infraclavicular catheter

Truncal

- thoracic paravertebral catheters
- transmuscular quadratus lumborum catheters
- rectus sheath catheters (popular in the UK)

Lower limb

- Popliteal sciatic catheters
- Proximal sciatic catheters
- Saphenous catheters
- Adductor canal catheters (done the right way in the adductor canal)
- Femoral catheters
- Lumbar plexus catheters (Shamrock)
- Lumbosacral plexus catheters (SSPS)



Programme might be subject to minor changes