

## Turn on

Press **Power**. System will beep and start-up screen will appear. System takes less than 20 seconds to be ready for scanning.

## Entering Patient Data

Press **Patient** and select **New** from the soft keys. Position cursor using the track pad and **Select** or tab on keyboard to move between fields. Enter details using keyboard.

When patient data is entered select Exam type: Choose drop down box and use **Select** to choose appropriate preset Exam type. The transducer selected enables specific Exam presets. Exam presets may be changed during the study by pressing **Exam**. When the entry is complete; Press **Done** using the soft keys, or **2D** to begin scanning.

## Image Optimisation

### 1 – Adjust Depth controls

Decreasing the image depth allows you to make the structures you are visualising as large as possible on the screen. Increasing the image depth allows you to visualise deeper structures within the image. A scale marking is displayed along right side of screen in 5 mm, 1 cm or 5 cm increments, depending on imaging depth. Total depth in centimeters is displayed at lower right of screen.

### 2 – Gain Controls

Gain Controls may be adjusted to balance the image:

**Near** – Use for manual gain control upper half image

**Far** – Use for manual gain control lower half image

**Gain** – Use for manual gain control of whole image

**Auto** – Press to automatically balance image

### 3 – Mode Controls

For **2D**, **Color**, **Doppler** and **M-Mode** activation press appropriate mode button from the right lower corner. The **Gain** control becomes the Color and Doppler Gain control when in that mode. Use **Update** to change between live images on screen in Doppler and M-Mode.

## Color / Doppler

Press **Color**. Press **Select** to change between adjusting color box size and position. Use touch pad to change position when box is solid. Use touch pad to change size when box outline is broken.

Press **Color** soft key to change to Color Power Doppler (CPD)

## Activate Pulsed Wave Doppler

Press **Doppler**. Use **Select** button to change angle of Doppler line of sight, Doppler angle and sample volume size—active control is green and use touch pad to alter angle.

Press **Doppler** button again to start live trace

Press **Update** button to change between Image and Doppler trace

Press **Freeze** to freeze image and **Save** to store image to internal flash memory

## Freeze

Press **Freeze**. Cineloop function activates automatically. Use touch pad, **Gain** or **Left** and **Right** arrows on keyboard to scroll back through frames to obtain required image.



# SONOSITE EDGE® ULTRASOUND SYSTEM

## Measure

**Freeze** the image.

Press **Caliper** button. Use touch pad to move active green cursor

Use **Select** to change between active cursors

To select another measurement press **Caliper** again

## Calculations

**Freeze** the image. Press **Calcs** button. Appropriate calculations for Exam Preset and mode appear. (2D calculations in B-Mode, Doppler calculations when Doppler is activated, M-Mode calculations when M-Mode is activated).

To save calculation to menu press **Save Calc** when measurement is active. Check mark will appear next to calculation to confirm save.

To save image press **Save**

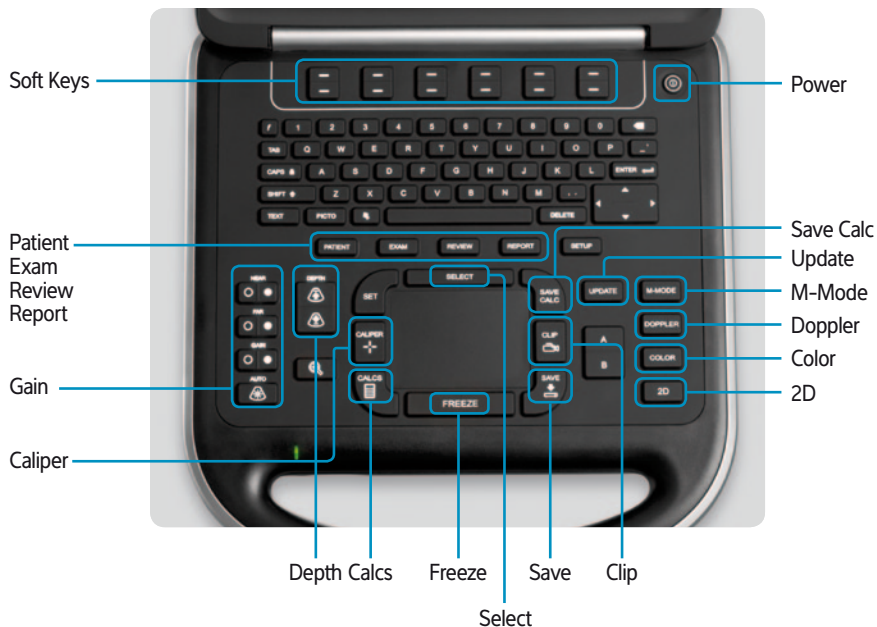
To see report press **Report**

Save any relevant pages as image Press **Save**

To review images press **Review** and scroll through saved images using soft keys

When all images and report screens are saved **End** patient to ready images for export to USB

To end Patient exam press **Patient** button and use **New/End** soft key to end exam



### SonoSite Ltd

European Headquarters, Alexander House, 40A Wilbury Way, Hitchin, Herts SG4 0AP, United Kingdom  
Tel: +44 1462-444800 Fax: +44 1462-444801 E-mail: [europe@sonosite.com](mailto:europe@sonosite.com)

[www.sonosite.com](http://www.sonosite.com)