

## Quick Reference Guide

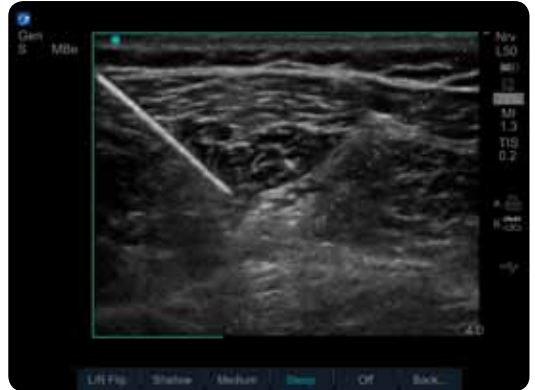
# ADVANCED NEEDLE VISUALISATION TECHNOLOGY

Advanced Needle Visualisation, a proprietary and patented software algorithm from SonoSite, clearly enhances needle visualisation while maintaining striking image quality of the target and surrounding anatomy. Advanced Needle Visualisation (SonoMBe™ Imaging) is easy to use and requires no setup time, additional hardware, or expensive needles. This guide provides practical tips on using this technology to fully optimise visualisation of the needle at various angles and depths.

### To Get Started:

- In 2D imaging, select page 2 using the soft key menu.
- Select SonoMBe.
- Change LT/RT flip to align for the needle approach.
- Choose a Shallow, Medium, or Steep angle depending upon the depth of the target structure.
- Place the target on the needle side of the angle guide (dotted green line).
- For best visualisation of the needle, insert the needle so that it is perpendicular to the angle guide.
- Use the area defined by the green line for maximum visibility of the needle, keeping the needle on the needle side of the angle guide.
- To return to 2D imaging only, select Off.

# ADVANCED NEEDLE VISUALISATION TECHNOLOGY



Note that the needle path is perpendicular to the angle guide and the target structure is inside the angle guide area.



Note incorrect placement of target structure outside the needle guide area. In this case the target structure should be positioned to the left of the dotted green.

Dr. David Auyong  
Staff Anesthesiologist, Seattle, Washington

[www.sonosite.com/needlevisualization](http://www.sonosite.com/needlevisualization)